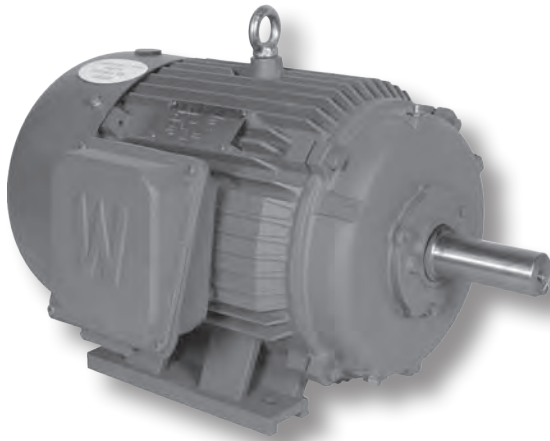


# WORLDWIDE GENERAL PURPOSE MOTORS PREMIUM EFFICIENCY / HIGH EFFICIENCY

TEFC Enclosure ▪ Rigid Base

Three-Phase ▪ 208-230/460 and 460 Volt



## Product Overview

- 1 - 600 HP
- 3600, 1800, 1200 and 900 RPM
- 208-230/460 volt (1-200 HP)
- 460 volt (250-600 HP)
- TEFC enclosure
- 1.15 service factor
- Class F insulation
- Rigid base
- Premium efficiency (1-200 HP, 3600, 1800 and 1200 RPM)
- EISA-Compliant - high efficiency (1-200 HP, 900 RPM and 250-600 HP)
- Inverter ready, 4:1 CT / 10:1 VT (1-200 HP, 3600, 1800 and 1200 RPM)
- Suitable for 50 hz operation with 1.0 service factor (1-150 HP)



HP	RPM	Voltage	Frame	Model Number	FL Amps (A)	FL Eff. (%)	Approx. Wt. (lbs.)	Notes
1	1800	208-230/460	143T	PEWWE1-18-143T	1.6	85.5	53	I P
	1200	208-230/460	145T	PEWWE1-12-145T	1.8	82.5	60	I P
	3600	208-230/460	143T	PEWWE1.5-36-143T	2.1	84.0	49	I P
1.5	1800	208-230/460	145T	PEWWE1.5-18-145T	2.3	86.5	62	I P
	1200	208-230/460	182T	PEWWE1.5-12-182T	2.4	87.5	100	I P
	3600	208-230/460	145T	PEWWE2-36-145T	2.6	85.5	58	I P
2	1800	208-230/460	145T	PEWWE2-18-145T	3.0	86.5	67	I P
	1200	208-230/460	184T	PEWWE2-12-184T	3.1	88.5	101	I P
	3600	208-230/460	182T	PEWWE3-36-182T	3.7	86.5	98	I P
3	1800	208-230/460	182T	PEWWE3-18-182T	4.0	89.5	119	I P
	1200	208-230/460	213T	PEWWE3-12-213T	4.4	89.5	168	I P
	900	208-230/460	215T	WWE3-9-215T	5.0	84.0	143	E
5	3600	208-230/460	184T	PEWWE5-36-184T	6.0	88.5	106	I P
	1800	208-230/460	184T	PEWWE5-18-184T	6.5	89.5	125	I P
	1200	208-230/460	215T	PEWWE5-12-215T	7.2	89.5	187	I P
7.5	900	208-230/460	254T	WWE5-9-254T	7.6	85.5	240	E
	3600	208-230/460	213T	PEWWE7.5-36-213T	8.6	89.5	168	I P
	1800	208-230/460	213T	PEWWE7.5-18-213T	9.3	91.7	181	I P
10	1200	208-230/460	254T	PEWWE7.5-12-254T	10.4	91.0	265	I P
	900	208-230/460	256T	WWE7.5-9-256T	11.2	85.5	280	E
	3600	208-230/460	215T	PEWWE10-36-215T	11.6	90.2	185	I P
15	1800	208-230/460	215T	PEWWE10-18-215T	12.4	91.7	205	I P
	1200	208-230/460	256T	PEWWE10-12-256T	14.2	91.0	302	I P
	900	208-230/460	284T	WWE10-9-284T	14.2	88.5	395	E
20	3600	208-230/460	254T	PEWWE15-36-254T	17.2	91.0	276	I P
	1800	208-230/460	254T	PEWWE15-18-254T	18.2	92.4	311	I P
	1200	208-230/460	284T	PEWWE15-12-284T	18.8	91.7	397	I P
30	900	208-230/460	286T	WWE15-9-286T	20.5	88.5	390	E

- E EISA-Compliant - high efficiency
- I Inverter ready, 4:1 CT / 10:1 VT
- P Premium efficiency
- R Roller bearing on drive end for belted applications

Dimensions On Page 91-92

Continued On Next Page



# WORLDWIDE GENERAL PURPOSE MOTORS PREMIUM EFFICIENCY / HIGH EFFICIENCY

TEFC Enclosure ▪ Rigid Base

Three-Phase ▪ 208-230/460 and 460 Volt



HP	RPM	Voltage	Frame	Model Number	FL Amps (A)	FL Eff. (%)	Approx. Wt. (lbs.)	Notes
20	3600	208-230/460	256T	PEWWE20-36-256T	23.2	91.0	306	I P
	1800	208-230/460	256T	PEWWE20-18-256T	24.1	93.0	390	I P
	1200	208-230/460	286T	PEWWE20-12-286T	25.0	91.7	463	I P
	900	208-230/460	324T	WWE20-9-324T	27.3	89.5	529	E
25	3600	208-230/460	284T	PEWWE25-36-284T	28.8	91.7	397	I P
	3600	208-230/460	284TS	PEWWE25-36-284TS	28.8	91.7	397	I P
	1800	208-230/460	284T	PEWWE25-18-284T	29.2	93.6	410	I P
	1200	208-230/460	324T	PEWWE25-12-324T	33.7	93.0	595	I P
	900	208-230/460	326T	WWE25-9-326T	33.3	89.5	562	E
30	3600	208-230/460	286T	PEWWE30-36-286T	34.2	91.7	430	I P
	3600	208-230/460	286TS	PEWWE30-36-286TS	34.2	91.7	430	I P
	1800	208-230/460	286T	PEWWE30-18-286T	34.7	93.6	450	I P
	1200	208-230/460	326T	PEWWE30-12-326T	38.6	93.0	606	I P
	900	208-230/460	364T	WWE30-9-364T	38.9	91.0	694	E
40	3600	208-230/460	324T	PEWWE40-36-324T	46.3	92.4	518	I P
	3600	208-230/460	324TS	PEWWE40-36-324TS	46.3	92.4	518	I P
	1800	208-230/460	324T	PEWWE40-18-324T	46.5	94.1	617	I P
	1200	208-230/460	364T	PEWWE40-12-364T	50.7	94.1	816	I P
	900	208-230/460	365T	WWE40-9-365T	52.4	91.0	754	E
50	3600	208-230/460	326T	PEWWE50-36-326T	56.7	93.0	562	I P
	3600	208-230/460	326TS	PEWWE50-36-326TS	56.7	93.0	562	I P
	1800	208-230/460	326T	PEWWE50-18-326T	57.1	94.5	675	I P
	1200	208-230/460	365T	PEWWE50-12-365T	62.5	94.1	915	I P
	900	208-230/460	404T	WWE50-9-404T	65.0	91.7	1033	E R
60	3600	208-230/460	364T	PEWWE60-36-364T	68.6	93.6	728	I P
	3600	208-230/460	364TS	PEWWE60-36-364TS	68.6	93.6	728	I P
	1800	208-230/460	364T	PEWWE60-18-364T	69.9	95.0	827	I P
	1200	208-230/460	404T	PEWWE60-12-404T	70.3	94.5	1069	I P R
	900	208-230/460	405T	WWE60-9-405T	80.0	91.7	1183	E R
75	3600	208-230/460	365T	PEWWE75-36-365T	83.8	93.6	772	I P
	3600	208-230/460	365TS	PEWWE75-36-365TS	83.8	93.6	772	I P
	1800	208-230/460	365T	PEWWE75-18-365T	84.1	95.4	904	I P
	1200	208-230/460	405T	PEWWE75-12-405T	85.9	94.5	1158	I P R
	900	208-230/460	444T	WWE75-9-444T	95.0	93.0	1378	E R
100	3600	208-230/460	405TS	PEWWE100-36-405TS	112	94.1	1103	I P
	1800	208-230/460	405T	PEWWE100-18-405T	113	95.4	1213	I P R
	1800	208-230/460	405T	PEWWE100-18-405TBB	113	95.4	1213	I P
	1200	208-230/460	444T	PEWWE100-12-444T	121	95.0	1455	I P R
	900	208-230/460	445T	WWE100-9-445T	131	93.0	1473	E R
125	3600	208-230/460	444TS	PEWWE125-36-444TS	132	95.0	1455	I P
	1800	208-230/460	444T	PEWWE125-18-444T	137	95.4	1455	I P R
	1800	208-230/460	444T	PEWWE125-18-444TBB	137	95.4	1455	I P
	1200	208-230/460	445T	PEWWE125-12-445T	145	95.0	1632	I P R
	900	208-230/460	445/7T	WWE125-9-445/7T	154	93.6	1798	E R
150	3600	208-230/460	445TS	PEWWE150-36-445TS	161	95.0	1654	I P
	1800	208-230/460	445T	PEWWE150-18-445T	168	95.8	1632	I P R
	1800	208-230/460	445T	PEWWE150-18-445TBB	168	95.8	1632	I P
	1200	208-230/460	445/7T	PEWWE150-12-445/7T	176	95.8	2051	I P R
	900	460	449T	WWE150-9-449T	186	94.5	2520	E R

- E EISA-Compliant - high efficiency
- I Inverter ready, 4:1 CT / 10:1 VT
- P Premium efficiency
- R Roller bearing on drive end for belted applications

Dimensions On Page 91-92

Continued On Next Page

# WORLDWIDE GENERAL PURPOSE MOTORS PREMIUM EFFICIENCY / HIGH EFFICIENCY



TEFC Enclosure ▪ Rigid Base

Three-Phase ▪ 208-230/460 and 460 Volt

WORLDWIDE  
GENERAL PURPOSE

HP	RPM	Voltage	Frame	Model Number	FL Amps (A)	FL Eff. (%)	Approx. Wt. (lbs.)	Notes
200	3600	208-230/460	445/7TS	PEWWE200-36-445/7TS	217.0	95.4	2051	I P
	1800	208-230/460	445/7T	PEWWE200-18-445/7T	228.0	96.2	2051	I P R
	1800	208-230/460	445/7T	PEWWE200-18-445/7TB	228.0	96.2	2051	I P
	1200	460	449T	PEWWE200-12-449T	234.0	95.8	2508	I P R
	900	460	449T	WWE200-9-449T	250	94.3	2900	E R
250	3600	460	449TS	WWE250-36-449TS	272	95.0	2305	E
	1800	460	449T	WWE250-18-449T	282	95.0	2508	E R
	1800	460	449T	WWE250-18-449TB	282	95.0	2508	E
	1800	460	505Z	WWE250-18-505Z	276	94.8	2359	E R
	1800	460	505UZ	WWE250-18-505UZ	276	94.8	2359	E R
	1200	460	449T	WWE250-12-449T	300	95.4	2750	E R
	1200	460	449T	WWE250-12-449TB	300	95.4	2750	E
	1200	460	586/7	WWE250-12-586/7	289	94.5	3696	E R
	1200	460	586/7UZ	WWE250-12-586/7UZ	289	94.5	3696	E R
	900	460	586/7	WWE250-9-586/7	309	94.4	4030	E R
300	1800	460	449T	WWE300-18-449T	334	95.7	2728	E R
	1800	460	449T	WWE300-18-449TB	334	95.7	2728	E
	1800	460	586/7	WWE300-18-586/7	323	95.0	3784	E R
	1800	460	586/7	WWE300-18-586/7B	323	95.0	3784	E
	1800	460	586/7UZ	WWE300-18-586/7UZ	323	95.0	3784	E R
	1200	460	449T	WWE300-12-449T	355	94.5	2830	E R
	1200	460	449T	WWE300-12-449TB	355	94.5	2830	E
	1200	460	586/7	WWE300-12-586/7	337	95.2	4136	E R
	1200	460	586/7UZ	WWE300-12-586/7UZ	337	95.2	4136	E R
	900	460	586/7	WWE300-9-586/7	364	94.9	4440	E R
900	460	586/7UZ	WWE300-9-586/7UZ	364	94.9	4440	E R	
350	1800	460	586/7	WWE350-18-586/7	378	95.8	3960	E R
	1800	460	586/7	WWE350-18-586/7B	378	95.8	3960	E
	1800	460	586/7UZ	WWE350-18-586/7UZ	378	95.8	3960	E R
	1200	460	586/7	WWE350-12-586/7	390	95.1	4145	E R
	1200	460	586/7	WWE350-12-586/7B	390	95.1	4145	E
	1200	460	586/7UZ	WWE350-12-586/7UZ	390	95.1	4145	E R
400	1800	460	586/7	WWE400-18-586/7	430	95.3	4101	E R
	1800	460	586/7	WWE400-18-586/7B	430	95.3	4101	E
	1800	460	586/7UZ	WWE400-18-586/7UZ	430	95.3	4101	E R
	1200	460	586/7	WWE400-12-586/7	448	95.0	4409	E R
	1200	460	586/7	WWE400-12-586/7B	448	95.0	4409	E
	1200	460	586/7UZ	WWE400-12-586/7UZ	448	95.0	4409	E R
450	1800	460	586/7	WWE450-18-586/7	478	96.1	4500	E R
	1200	460	586/7	WWE450-12-586/7	501	95.8	4500	E R ▲
500	1800	460	586/7	WWE500-18-586/7	539	95.8	4630	E R
	1800	460	586/7	WWE500-18-586/7B	539	95.8	4630	E
	1800	460	586/7UZ	WWE500-18-586/7UZ	539	95.8	4630	E R
	1200	460	586/7	WWE500-12-586/7	557	95.0	4740	E R ▲
	1200	460	586/7UZ	WWE500-12-586/7UZ	557	95.0	4740	E R ▲
600	1800	460	586/7	WWE600-18-586/7	661	95.0	4630	E R ▲

- E EISA-Compliant - high efficiency
- I Inverter ready, 4:1 CT / 10:1 VT
- P Premium efficiency
- R Roller bearing on drive end for belted applications
- ▲ 1.0 service factor

